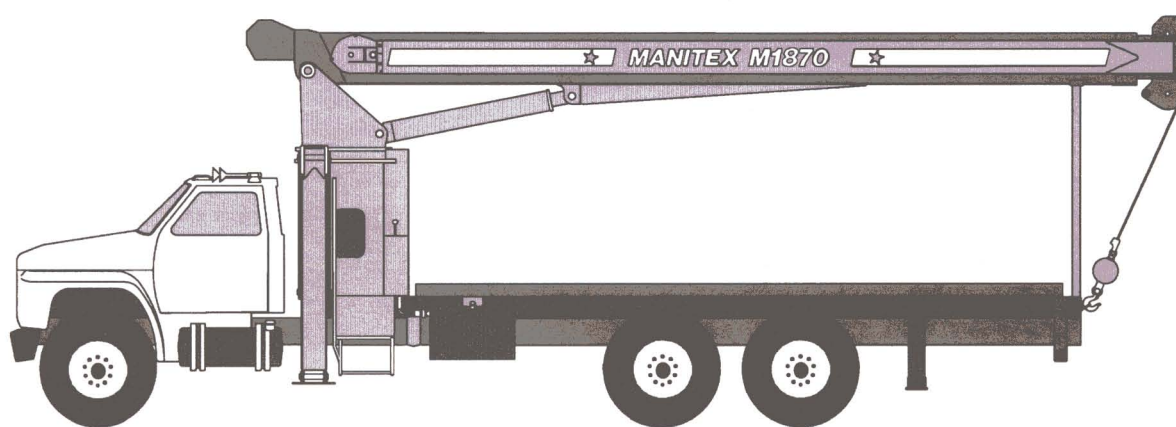




## Millennium Series™ M1800

### General Specifications

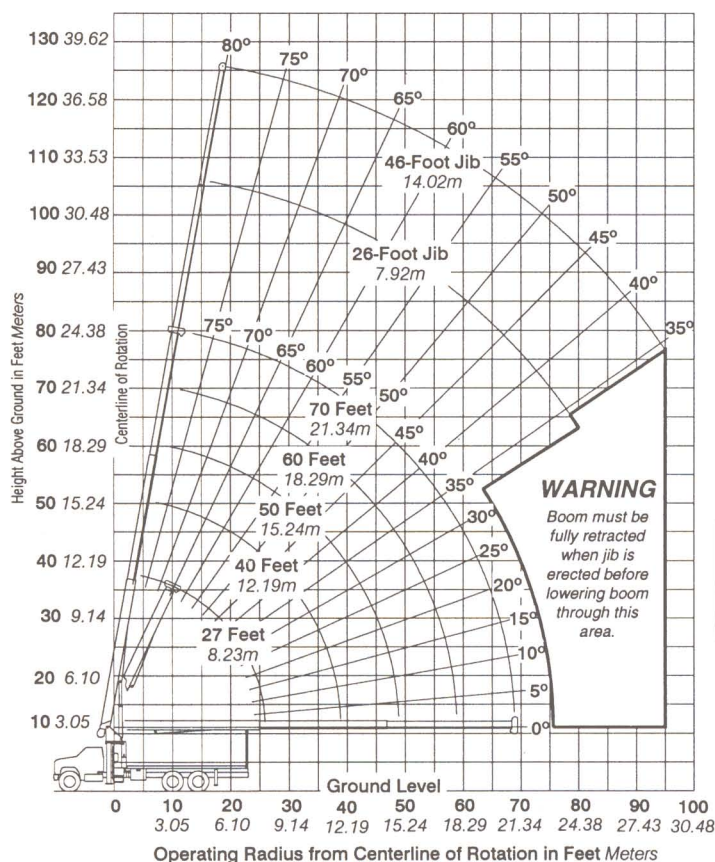
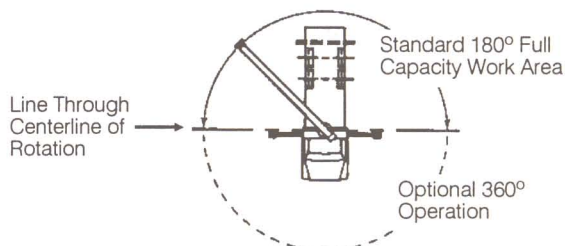


Model shown is M1870 with optional jib.

#### STANDARD EQUIPMENT

- 3-Section telescopic boom.  
**M1870** - 27' to 70' (8.23m to 21.34m).  
**M1849** - 20' to 49' (6.10m to 14.94m).
- 2-Speed planetary hoist.
- 5-Ton (4.5-mt) hook and ball.
- 3-Sheave boom point.
- Anti-two block shutoff.
- Boom hoist cylinder.
- System pressure gauge
- 70-Gallon (265-liter) hydraulic reservoir.
- Removable boom rest.
- Finish paint in Manitex colors.
- Engine start/stop.
- Operator/service/parts manuals.
- 260' (79.25m) of 1/2" (12.7mm) EIPSIWRC wire rope.
- 372° Non-continuous rotation.
- Pedestal, turret, rotation bearing and swing system.
- Dual operator control stations.
- Electronic capacity alert system - audio/visual warning.
- Audible outrigger/stabilizer motion alarm.
- A-frame rear stabilizers.
- A-frame link type outriggers.
- 3-Section vane type hydraulic pump.
- 20' (6.10m) Subframe.
- Signal horn.



**M1870 RANGE DIAGRAM****MODEL M1870****AREA OF OPERATION****ALLOWABLE LINE PULL**

1 PART LINE	2 PART LINE	3 PART LINE	4 PART LINE	5 PART LINE	<b>WARNING</b>  ANTI-TWO BLOCK SYSTEM MUST BE IN GOOD OPERATING CONDITION BEFORE OPERATING CRANE. REFER TO OWNER'S MANUAL.  KEEP AT LEAST 3 WRAPS OF LOAD ON DRUM AT ALL TIMES.
7600 lb 3477 kg	15200 lb 6895 kg	22800 lb 10342 kg	30400 lb 13789 kg	36000 lb 16329 kg	
7400 lb 3357 kg	14800 lb 6713 kg	22200 lb 10070 kg	29600 lb 13426 kg	36000 lb 16329 kg	

**WEIGHTS**

Total crane, including hydraulic fluid.....	15,700 lb	7,121 kg
26' (7.93m) Fixed length jib .....	819 lb	372 kg
46' (14.02m) Telescopic jib.....	1,220 lb	553 kg
15-Ton (13.6-mt) single-sheave block .....	260 lb	118 kg
20-Ton (18.1-mt) double-sheave block .....	345 lb	156 kg
Hanger sheave for 5-part line .....	50 lb	23 kg
20'4" (6.20m) steel or wood bed .....	1,900 lb	862 kg

**DEDUCTIONS**

Hanger Sheave .....	50 lb	23 kg
Overhaul Ball .....	120 lb	54 kg
Single-Sheave Load Block .....	260 lb	118 kg
Double-Sheave Load Block.....	350 lb	159 kg
Hose Reel .....	190 lb	86 kg

Swing-Around Jib..... See Load Rating Chart

**WARNING**

Lifting off the main boom point while the swing-around jib is erected is not intended or approved.

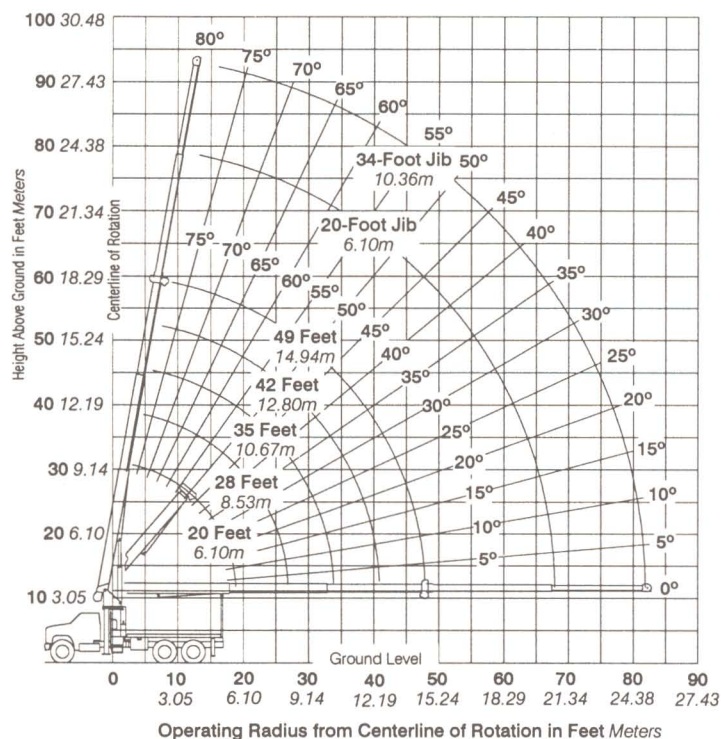
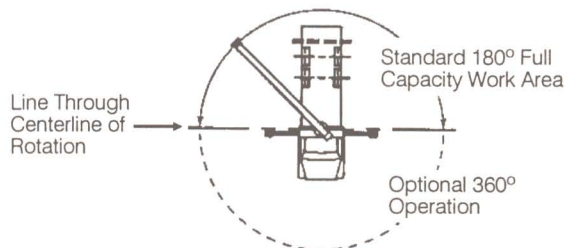
Outriggers and stabilizers fully extended and machine level.

**M1870 LOAD RATING CHART**

Meets ANSI B30.5 Requirements.

Operating Radius		BOOM LOAD RATINGS												JIB LOAD RATINGS								
		27 Feet 8.23 Meters			40 Feet 12.19 Meters			50 Feet 15.24 Meters			60 Feet 18.29 Meters			70 Feet 21.34 Meters			26 Foot 7.93 Meters			46 Foot 14.02 Meters		
Feet	Meters	°	lb	kg	°	lb	kg	°	lb	kg	°	lb	kg	°	lb	kg	°	lb	kg	°	lb	kg
5	1.52	79°	36,000	16,329													Fixed Jib			Telescopic Jib		
8	2.44	72°	25,580	11,603	79°	21,500	9,752															
10	3.05	68°	21,630	9,811	76°	19,540	8,863	79°	15,810	7,171												
12	3.66	63°	18,800	8,528	73°	16,890	7,661	77°	13,620	6,178	79°	12,780	5,797									
15	4.57	56°	15,760	7,148	68°	14,110	6,400	73°	11,270	5,112	76°	10,570	4,794	79°	10,000	4,536						
20	6.10	41°	12,280	5,570	60°	11,100	5,034	67°	8,750	3,969	71°	8,230	3,733	75°	7,750	3,515	79°	4,900	2,233			
25	7.62	17°	8,970	4,068	51°	9,140	4,146	60°	7,160	3,247	66°	6,710	3,043	70°	6,320	2,866	76°	4,170	1,892	79°	3,350	1,520
30	9.14				41°	7,660	3,474	53°	6,010	2,726	61°	5,630	2,553	66°	5,280	2,395	73°	3,540	1,606	77°	2,880	1,306
35	10.67				27°	6,100	2,767	46°	5,120	2,322	55°	4,810	2,181	61°	4,520	2,050	70°	3,040	1,379	74°	2,500	1,134
40	12.19							37°	4,360	1,977	49°	4,170	1,891	56°	3,920	1,778	67°	2,620	1,188	72°	2,180	989
45	13.72							25°	3,580	1,623	42°	3,620	1,642	51°	3,430	1,555	64°	2,280	1,034	69°	1,910	866
50	15.24										34°	3,110	1,410	45°	3,010	1,365	60°	1,970	894	66°	1,680	762
55	16.76										23°	2,550	1,156	39°	2,630	1,193	57°	1,690	767	64°	1,490	676
60	18.29													31°	2,260	1,025	53°	1,450	658	61°	1,320	599
65	19.81													21°	1,830	830	49°	1,240	563	58°	1,170	531
70	21.34				This capacity chart is for reference use only and must not be used for a specific serial number crane.											45°	1,060	481	55°	1,040	472	
75	22.86																40°	900	408	52°	920	417
80	24.38																35°	740	336	49°	820	372
85	25.91																			45°	730	331
90	27.43	Main boom load ratings are based on machine structural competence and do not exceed 85% of tipping.																		41°	630	286
95	28.96	Do not operate crane or accessories within 10 feet, 3.05 meters, of live power lines.																		37°	540	245
7300037-001			670	304		450	204		360	163		300	136		260	118	Deductions for stowed jib					



**M1849 RANGE DIAGRAM****MODEL M1849****AREA OF OPERATION****ALLOWABLE LINE PULL**

1 PART LINE	2 PART LINE	3 PART LINE	4 PART LINE	5 PART LINE	<b>WARNING</b> ANTI-TWO BLOCK SYSTEM MUST BE IN GOOD OPERATING CONDITION BEFORE OPERATING CRANE. REFER TO OWNER'S MANUAL. KEEP AT LEAST 3 WRAPS OF LOAD ON DRUM AT ALL TIMES.
7600 lb 3477 kg	15200 lb 6895 kg	22800 lb 10342 kg	30400 lb 13789 kg	34000 lb 15422 kg	1/2" (11.1mm) or 9/16" (14.29mm) 6x25 IWRC (3.5:1 SF), 26600 lb (12066 kg) Minimum breaking strength.
7400 lb 3357 kg	14800 lb 6713 kg	22200 lb 10070 kg	29600 lb 13426 kg	34000 lb 15422 kg	9/16" (14.29mm) Rotation resistant (5.0:1 SF), 37000 lb (16782 kg) Minimum breaking strength.

**WEIGHTS**

Total crane, including hydraulic fluid..	14,521 lb	6587 kg
20' (6.10m) Fixed length jib .....	490 lb	222 kg
34' (10.36m) Telescopic jib .....	944 lb	428 kg
15-Ton (13.6-mt) single-sheave block .....	260 lb	118 kg
20-Ton (18.1-mt) double-sheave block .....	345 lb	156 kg
Hanger sheave for 5-part line .....	50 lb	23 kg
20'4" (6.20m) Steel or wood bed .....	1,900 lb	862 kg

**DEDUCTIONS**

Hanger Sheave .....	50 lb	23 kg
Overhaul Ball .....	120 lb	54 kg
Single-Sheave Load Block .....	260 lb	118 kg
Double-Sheave Load Block .....	350 lb	159 kg
Hose Reel .....	190 lb	86 kg

Swing-Around Jib ..... See Load Chart

**WARNING** Lifting off the main boom point while the swing-around jib is erected is not intended or approved.

Outriggers and stabilizers fully extended and machine level.

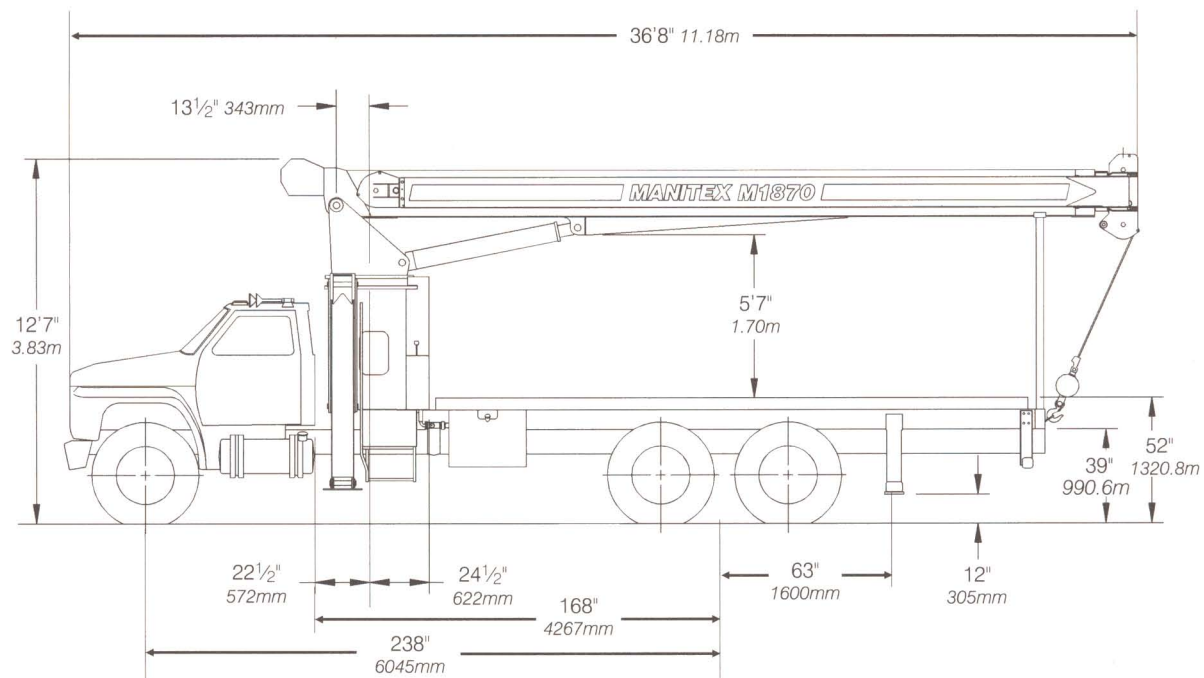
**M1849 LOAD RATING CHART**

Meets ANSI B30.5 Requirements.

Operating Radius		BOOM LOAD RATINGS												JIB LOAD RATINGS								
		20 Feet 6.10 Meters			28 Feet 8.53 Meters			35 Feet 10.67 Meters			42 Feet 12.80 Meters			49 Feet 14.94 Meters			20 Foot 6.10 Meters			34 Foot 10.36 Meters		
Feet	Meters	∠	lb	kg	∠	lb	kg	∠	lb	kg	∠	lb	kg	∠	lb	kg	∠	lb	kg	∠	lb	kg
5	1.52	75°	36,000	16,329																		
8	2.44	66°	28,000	12,701	73°	24,450	11,090	77°	20,790	9,430	80°	20,070	9,104									
10	3.05	59°	23,910	10,845	69°	21,880	9,925	74°	17,620	7,992	77°	16,900	7,666	79°	16,070	7,289						
12	3.66	52°	20,940	9,498	64°	19,120	8,673	70°	15,330	6,954	74°	14,680	6,659	77°	14,050	6,373	80°	7,600	3,447			
15	4.57	39°	17,500	7,938	57°	16,160	7,330	65°	12,920	5,860	70°	12,300	5,579	73°	11,730	5,321	78°	7,370	3,343	80°	4,550	2,064
20	6.10				43°	12,830	5,820	55°	10,290	4,667	62°	9,750	4,423	67°	9,260	4,200	74°	6,040	2,740	77°	3,860	1,751
25	7.62				23°	10,030	4,550	44°	8,500	3,856	54°	8,100	3,674	60°	7,680	3,484	69°	4,960	2,250	73°	3,350	1,520
30	9.14							29°	6,990	3,171	44°	6,890	3,125	53°	6,570	2,980	65°	4,150	1,882	70°	2,950	1,338
35	10.67										33°	5,840	2,649	45°	5,690	2,581	60°	3,520	1,597	66°	2,640	1,197
40	12.19										14°	4,490	2,037	35°	4,930	2,236	55°	3,030	1,374	62°	2,380	1,080
45	13.72													22°	4,100	1,860	50°	2,650	1,202	58°	2,170	984
50	15.24																44°	2,330	1,057	54°	1,990	903
55	16.76				This capacity chart is for reference use only and must not be used for a specific serial number crane..												38°	2,060	934	49°	1,770	803
60	18.29																30°	1,840	835	45°	1,590	721
65	19.81																19°	1,650	748	39°	1,430	649
70	21.34																			33°	1,280	581
75	22.86	Main boom load ratings are based on machine structural competence and do not exceed 85% of tipping.																	26°	1,160	526	
80	24.38	Do not operate crane or accessories within 10 feet, 3.05 meters, of live power lines.																	15°	1,050	476	



## M1800 OUTLINE DIMENSIONS



*These dimensions are general, not for Engineering. Some dimensions depend on truck selection. Dimensions shown on this page apply to both the M1870 and M1849 models.*

### TRUCK CHASSIS DATA

#### Minimum Requirements for M1800 Series

Some configurations and options may increase requirements.

Wheelbase .....	234 In.....	5,944mm
Cab to Axle.....	168 In.....	4,267mm
Frame Section Modulus.....	110,000 psi.....	758,450 kPa
	15.9 In <sup>3</sup> .....	260cc
Nominal Frame Width .....	34 In.....	864mm
Front Axle Gross Weight Rating .....	12,000 lb.....	5,443 kg
Rear Axle Gross Weight Rating .....	34,000 lb.....	15,422 kg

M1800

